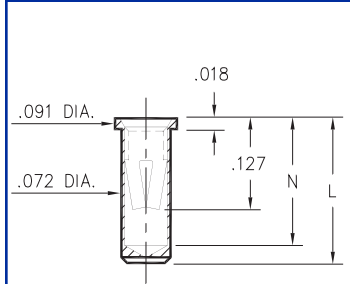




PIN RECEPTACLES
for .032" - .046" diameter pins

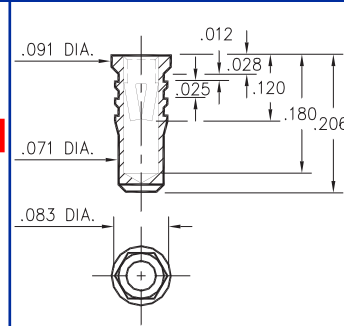


0327/0351/0373 0328 0334

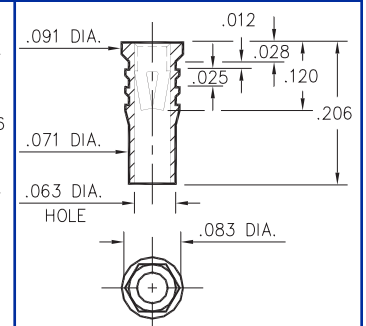


Basic Part Number	Length L	Depth N
0327-0	.206	.180
0351-0	.226	.200
0373-0	.270	.241

03XX-0-15-XX-34-XX-10-0
Solder mount in .075 min. mounting hole

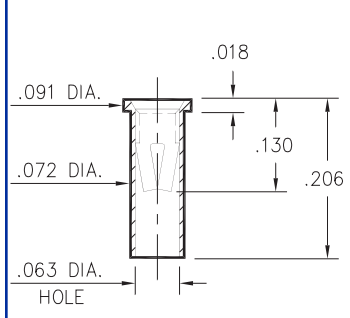


0328-0-15-XX-34-XX-10-0
Hex press-fit in .079 plated thru hole

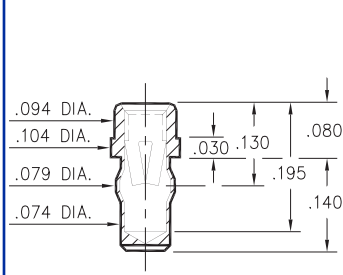


0334-0-15-XX-34-XX-10-0
Hex press-fit in .079 plated thru hole

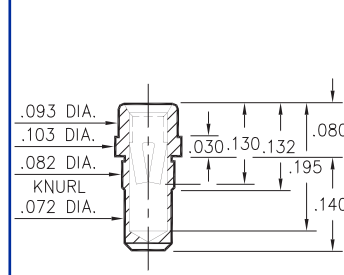
0312 0333 0357 0317



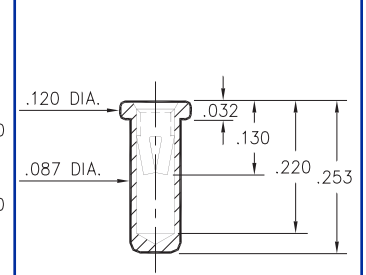
0312-0-15-XX-34-XX-10-0
Solder mount in .075 min. mounting hole



0333-0-42-XX-34-XX-10-0
Press-fit in .076 mounting hole

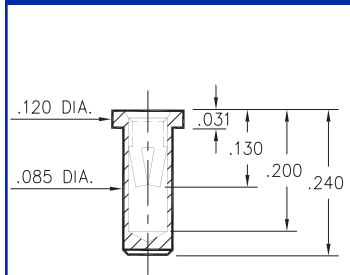


0357-0-15-XX-34-XX-10-0
Press-fit in .078 mounting hole

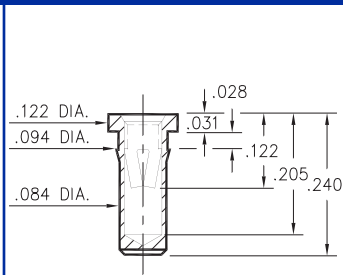


0317-0-15-XX-34-XX-10-0
Solder mount in .091 min. mounting hole

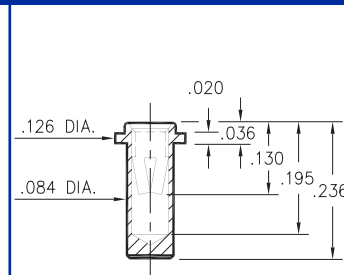
0340 0345 0316 0314



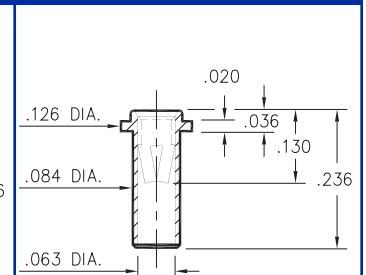
0340-0-15-XX-34-XX-10-0
Solder mount in .087 min. mounting hole



0345-0-15-XX-34-XX-10-0
Press-fit in .089 mounting hole



0316-0-15-XX-34-XX-10-0
Solder mount in .087 min. mounting hole



0314-0-15-XX-34-XX-10-0
Solder mount in .087 min. mounting hole

SPECIFICATIONS

SHELL MATERIAL:
Brass Alloy 360, 1/2 Hard

CONTACT MATERIAL:
Beryllium Copper Alloy 172, HT

DIMENSION IN INCHES
TOLERANCES ON:
LENGTHS: ±.005
DIAMETERS: ±.002
ANGLES: ± 2°

ORDER CODE: XXXX - X - XX - XX - 34 - XX - 10 - 0

BASIC PART # →

SPECIFY SHELL FINISH:

- 01 200µ" TIN/LEAD OVER NICKEL
- 80 200µ" TIN OVER NICKEL
- 15 10µ" GOLD OVER NICKEL

SPECIFY CONTACT FINISH:

- 01 200µ" TIN/LEAD OVER NICKEL
- 80 200µ" TIN OVER NICKEL
- 27 30µ" GOLD OVER NICKEL

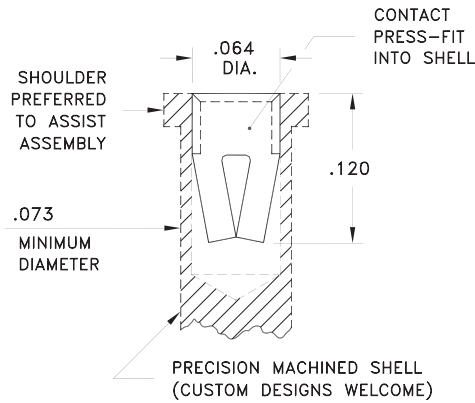
CONTACT

#34 CONTACT (DATA ON PAGE 212)

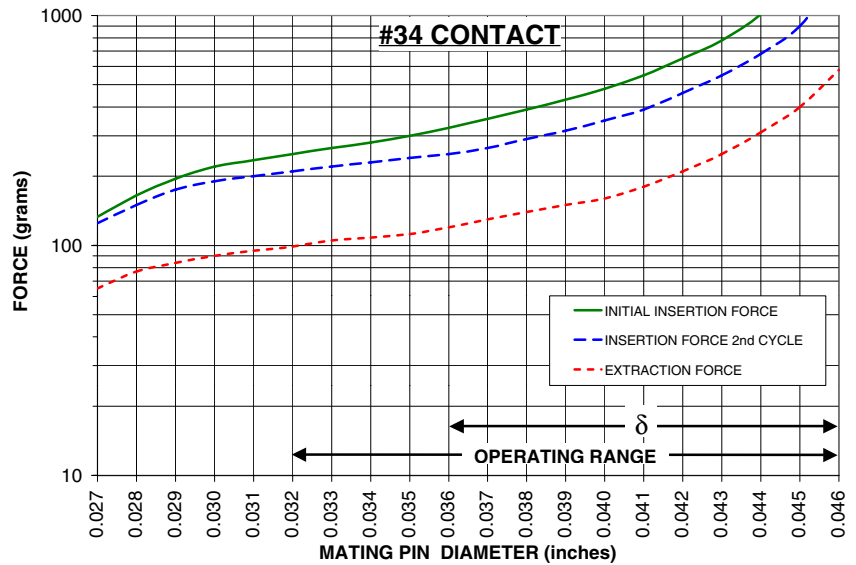
RoHS 2002/95/EC

#34 CONTACT

FOR .032-.046 DIAMETER PINS (δ =.010)
4-FINGER GROUP E (see page 203)

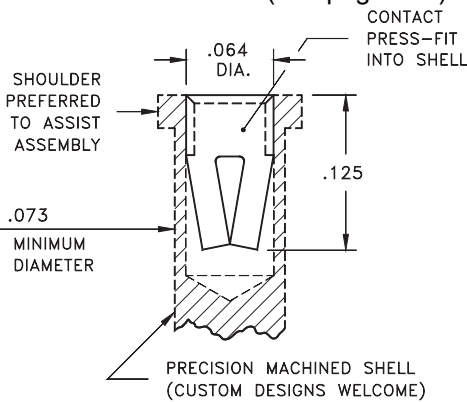


CONTACT MATERIAL:
BERYLLIUM COPPER Alloy 172, Heat Treated

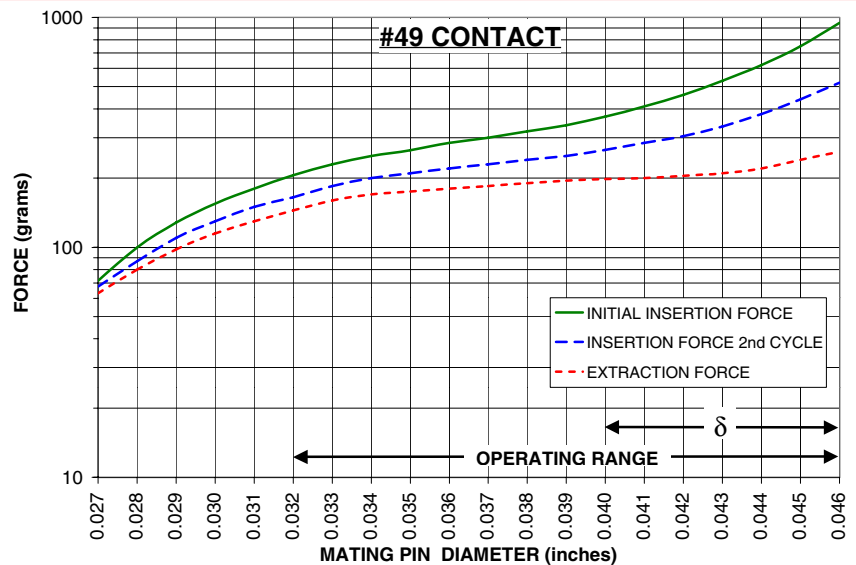


#49 CONTACT

FOR .032-.046 DIAMETER PINS (δ =.006)
4-FINGER GROUP E (see page 203)

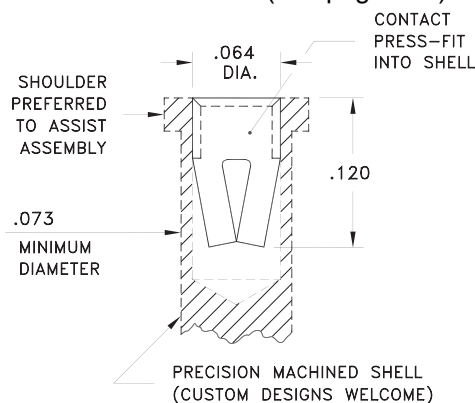


CONTACT MATERIAL:
BERYLLIUM COPPER Alloy 172, Heat Treated



#24 CONTACT

FOR .032-.046 DIAMETER PINS (δ =.009)
4-FINGER GROUP E (see page 203)



CONTACT MATERIAL:
BERYLLIUM NICKEL Alloy 360, Heat Treated

