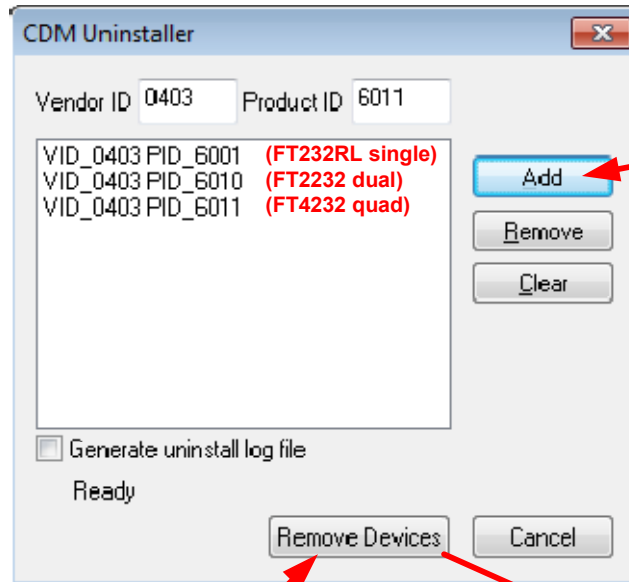


1. Unplug all FTDI serial ports.
2. Run CDM un-installer.

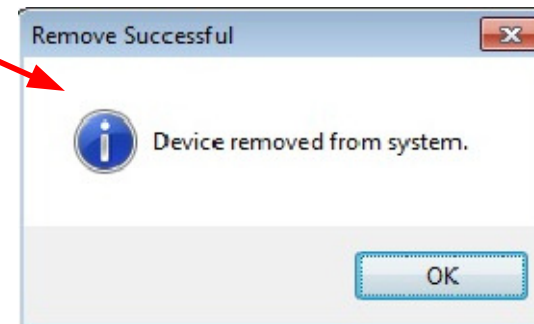


3. Add VID/PID for each port type.

4. Hit "Remove Devices"

5. Re-install FTDI driver: This program removes the phantom port as well as the FTDI drivers so the driver has to be put back.

6. Plug devices back in, they will start installing at or near COM1:



**Remove phantom ports (All at once)!**

Start (...Settings, Control panel, System, Advanced system settings...)

Control Panel > All Control Panel Items > System

- Control Panel Home
- Device Manager
- Remote settings
- System protection
- Advanced system settings

View basic information about your computer

Windows edition  
Windows 7 Professional  
Copyright © 2009 Microsoft Corporation. All rights reserved.  
Get more features with a new edition of Windows 7.

System Properties

Computer Name | Hardware | **Advanced** | System Protection | RemoteApp and Desktop Connections

You must be logged on as an Administrator to make most of these changes.

Performance  
Visual effects, processor scheduling, memory usage, and virtual memory  
Settings...

User Profiles  
Desktop settings related to your logon  
Settings...

Startup and Recovery  
System start-up, system failure, and debugging information  
Settings...

Environment Variables...

OK Cancel Apply

Environment Variables

User variables for jytaylor

Variable	Value
path	C:\Python26;%CommonProgramFiles%\...
TEMP	%USERPROFILE%\AppData\Local\Temp
TMP	%USERPROFILE%\AppData\Local\Temp

New... Edit... Delete

System variables

Variable	Value
AltiumPath	C:\Program Files (x86)\Altium Designer ...
CLASSPATH	.;C:\Program Files (x86)\Java\jre6\lib\ext\...
ComSpec	C:\Windows\system32\cmd.exe
FP_NO_HOST_C...	NO

New... Edit... Delete

OK Cancel

New System Variable

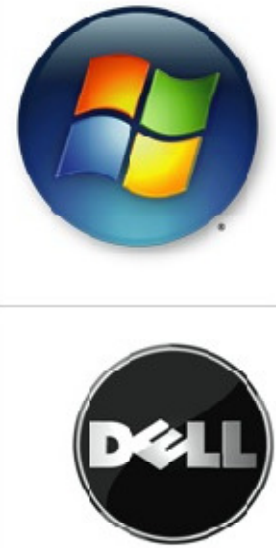
Variable name: devmgr\_show\_nonpresent\_devices

Variable value: 1

OK Cancel

**Remove phantom ports (One at a time).  
Set system variable to show un-used ports...**

Done



Start (...Settings, Control panel, System, Device manager...)

Control Panel > All Control Panel Items > System

Control Panel Home

- Device Manager
- Remote settings
- System protection
- Advanced system settings

Device Manager

File Action View Help

- Devices by type
- Devices by connection
- Resources by type
- Resources by connection
- Show hidden devices
- Customize...

FSZ5RM

- Batt
- Com
- Com
- Disk
- Disp
- DVD
- Human Interface Devices
- IDE ATA/ATAPI controllers
- IEEE 1394 Bus Host controllers
- Imaging devices
- Joyst
- Keyboards
- Mice and other pointing devices
- Monitors
- Network adapters
  - Intel(R) 82577LM Gigabit Network Connection
  - Intel(R) Centrino(R) Advanced-N 6200 AGN
  - Shrew Soft Virtual Adapter
- Ports (COM & LPT)
  - EC...
  - USB Serial Port (COM3)
  - USB Serial Port (COM5)
- Processors
- Smart card readers
- Sound, video and game controllers

Displays legacy devices and devices that are no longer installed.

See also

- Action Center
- Windows Update
- Performance Information and Tools

Windows activation

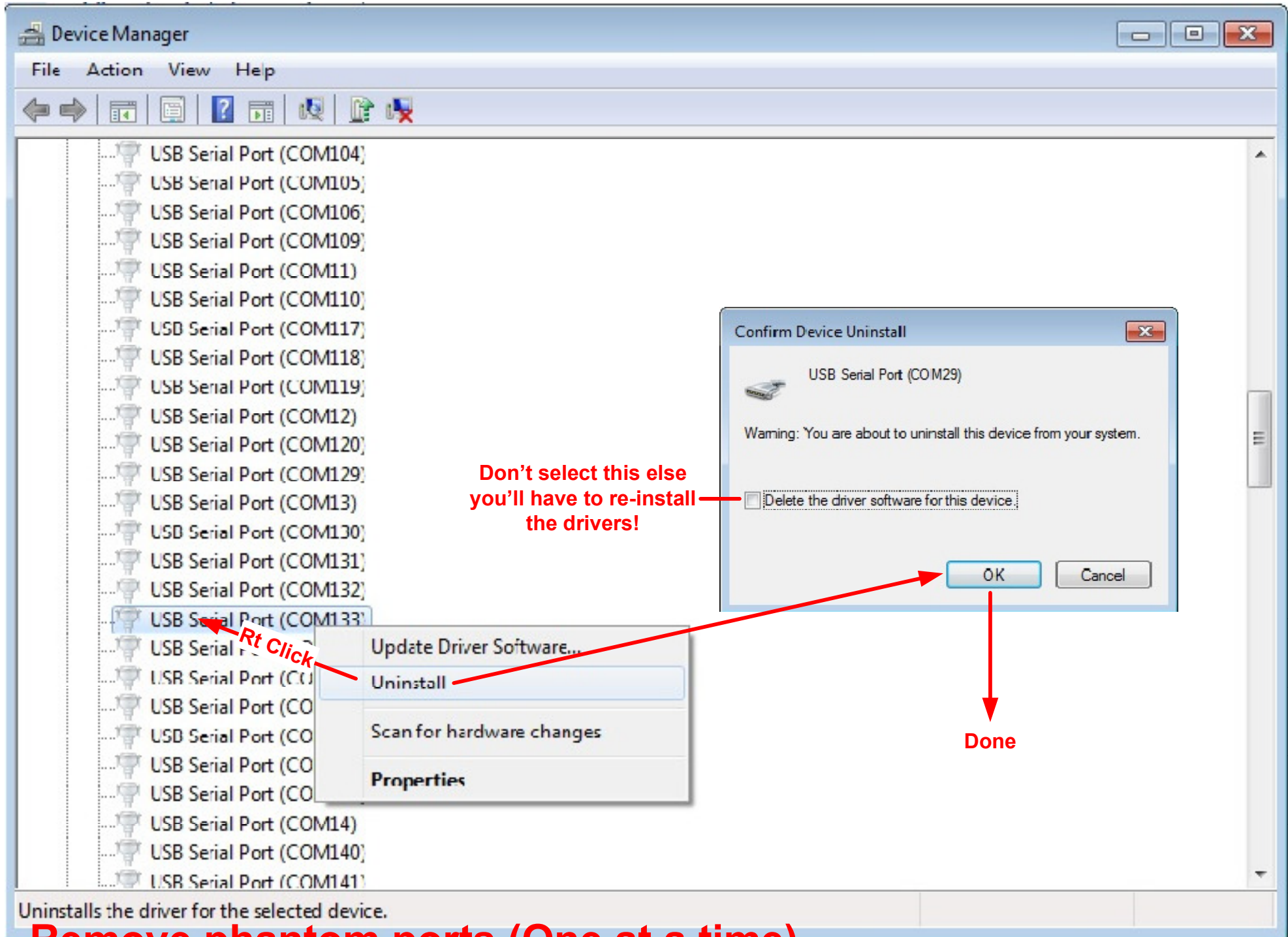
Windows is activated

Product ID: 00371-DEM-8992571-00524

ask for genuine Microsoft software

Learn more online...

...Remove phantom ports (One at a time)...



**...Remove phantom ports (One at a time).**