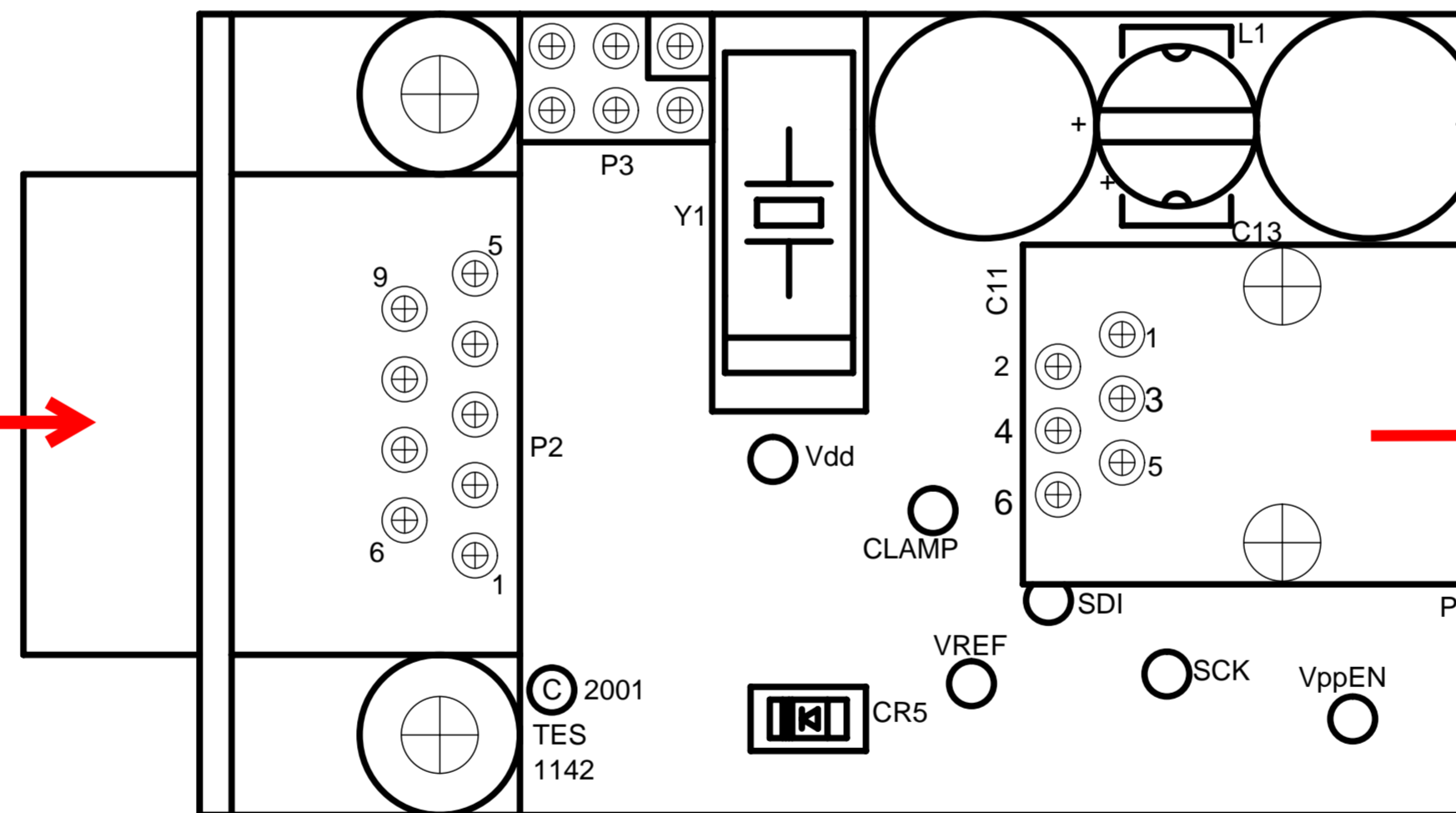
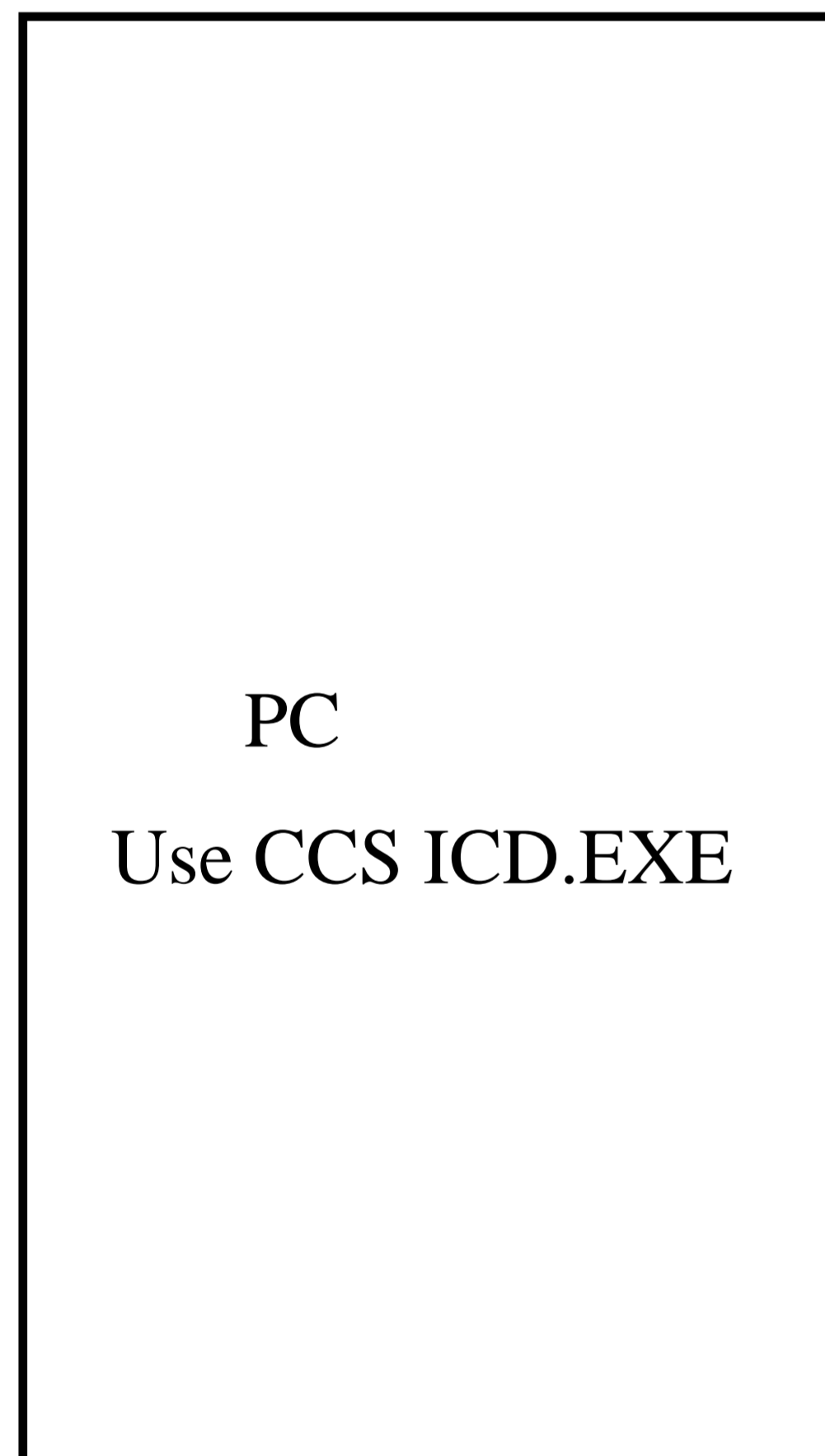


Rescuing a sick ICD...

Method #1: Use a good ICD to reflash a sick one.

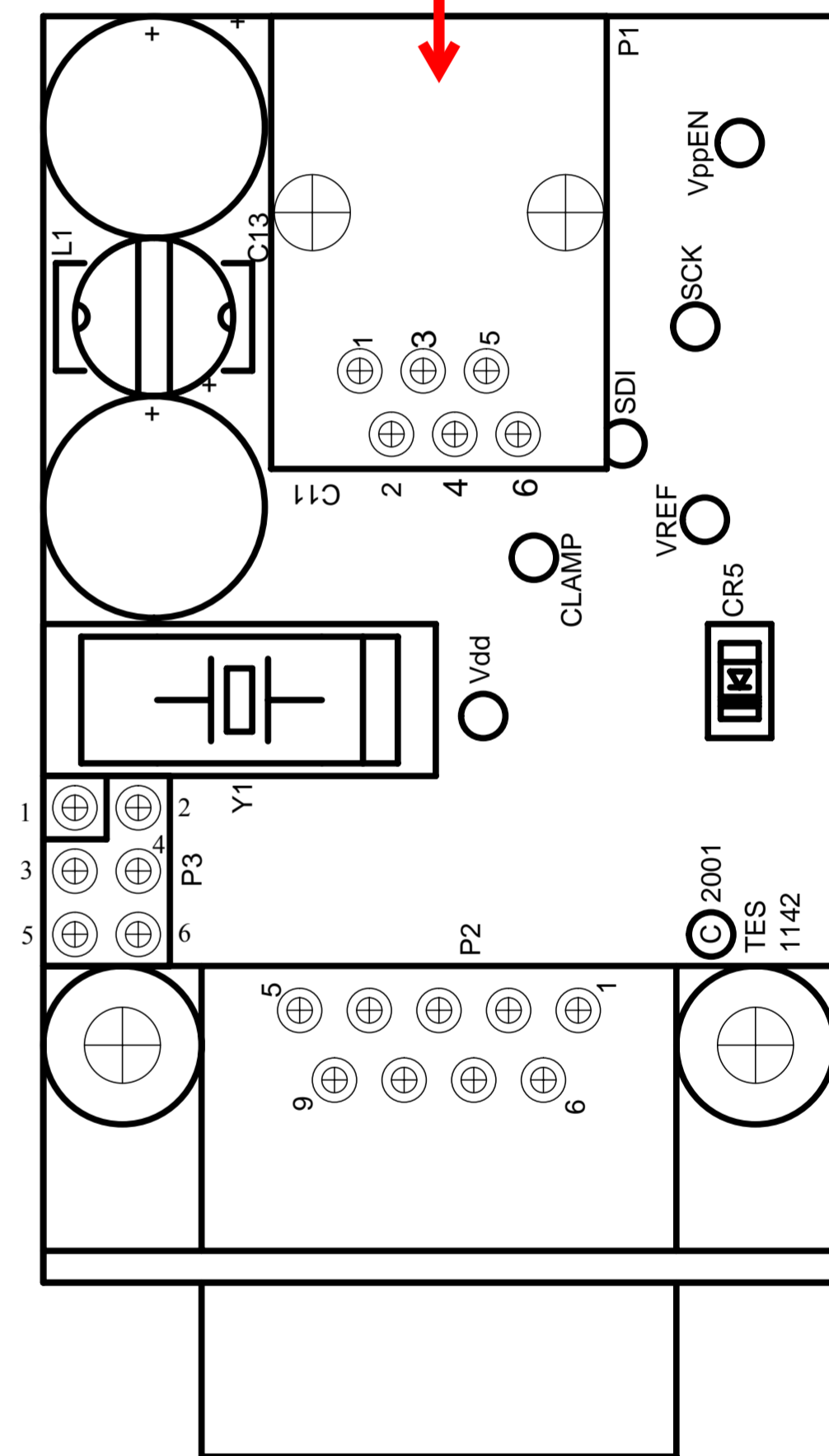
Method #2: Send your sick ICD to TES, no charge.

Connect units, Power up, Program, Power down.



"Healthy" ICD
(Ensure using PIC16 code!)

Match Pin #s



"Sick" ICD

Note: The CCS firmware in the TES Mini-ICD when hot plugged into a target can get a bad reset and in the time required for the WDT to perform a clean reset, could already have overwritten some part of its internal code making it unresponsive. To prevent this, plug the in ICD then power up the target. When done debugging or uploading to a target, power down the target and disconnect the ICD.